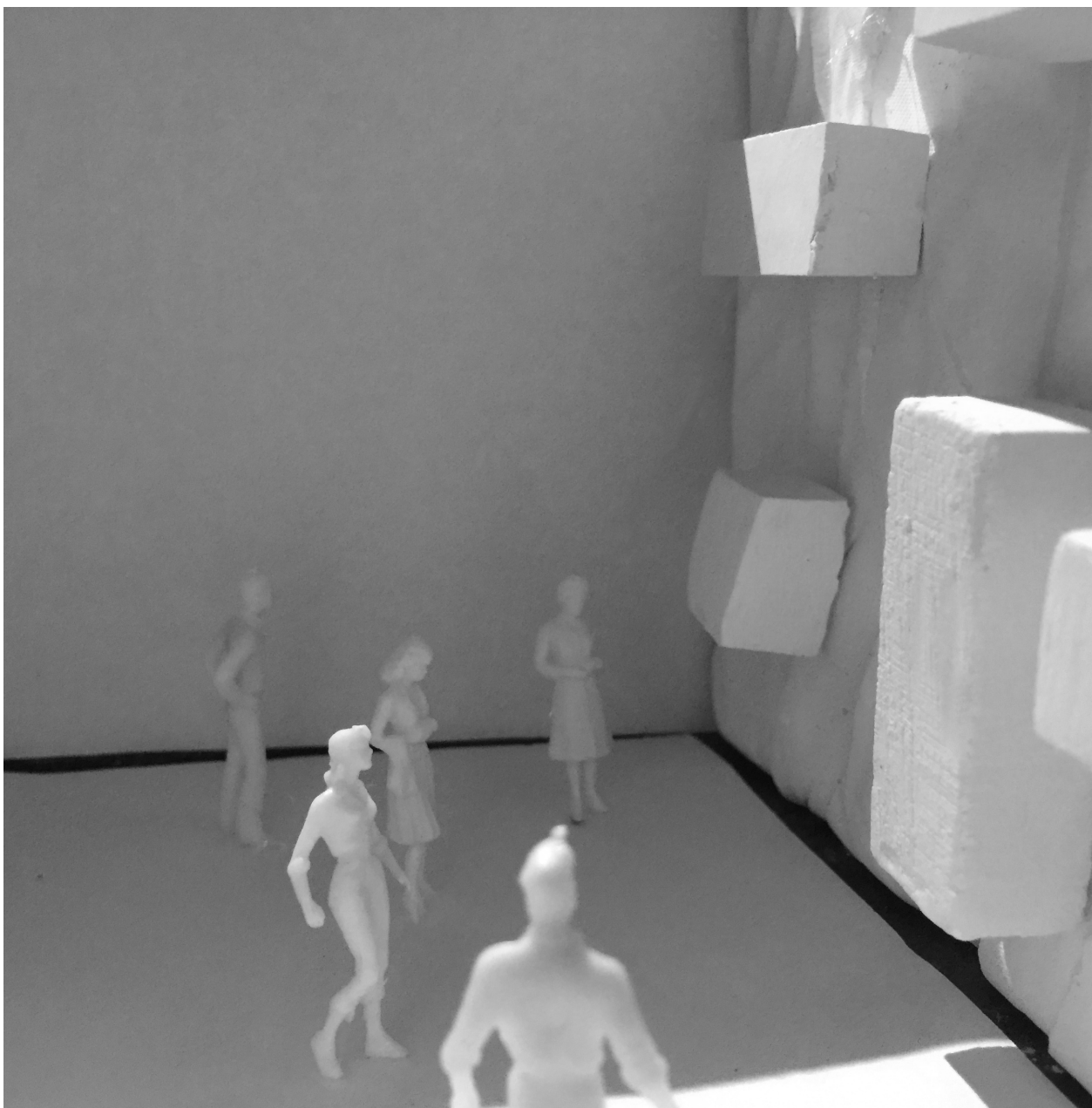
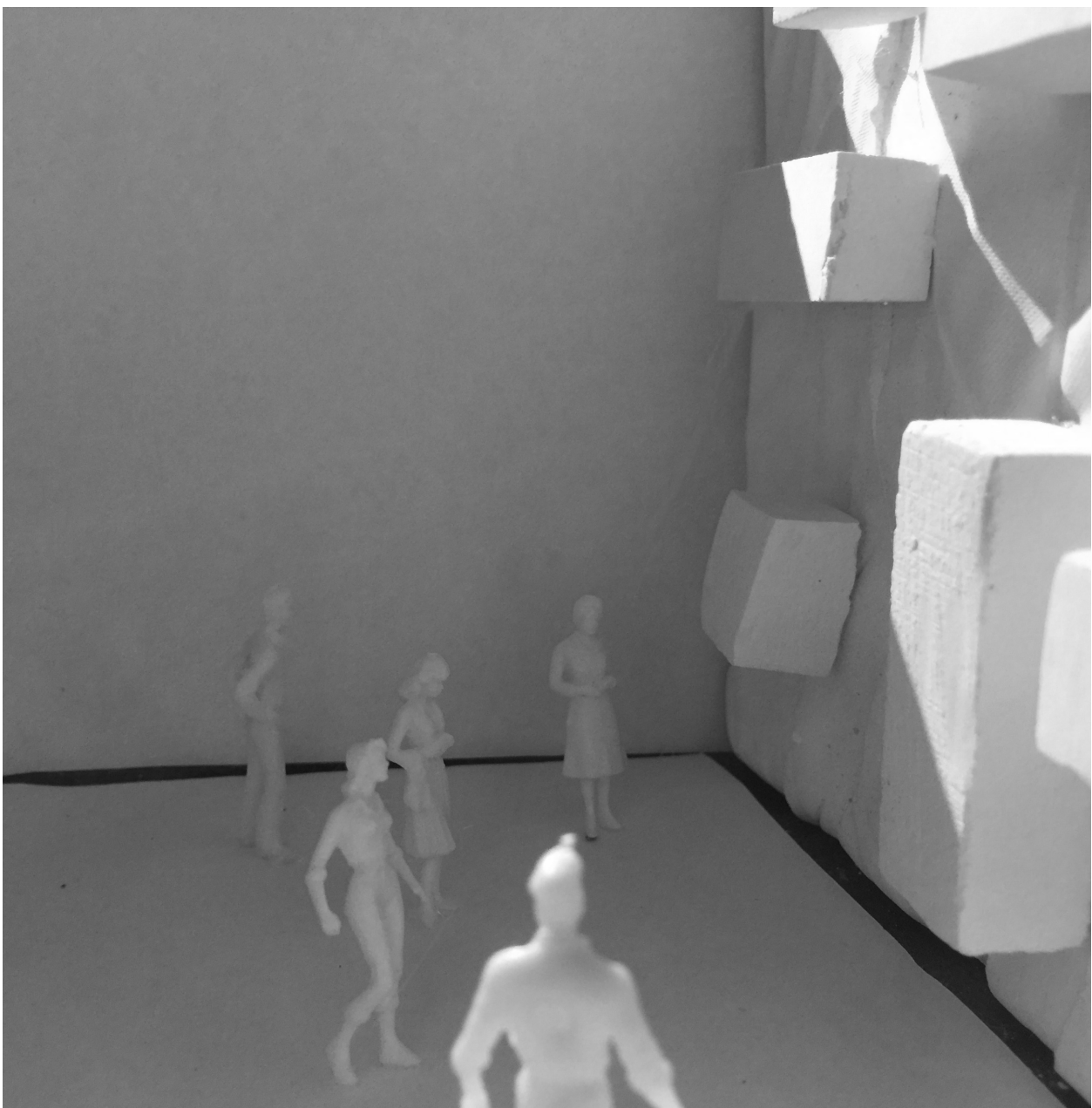
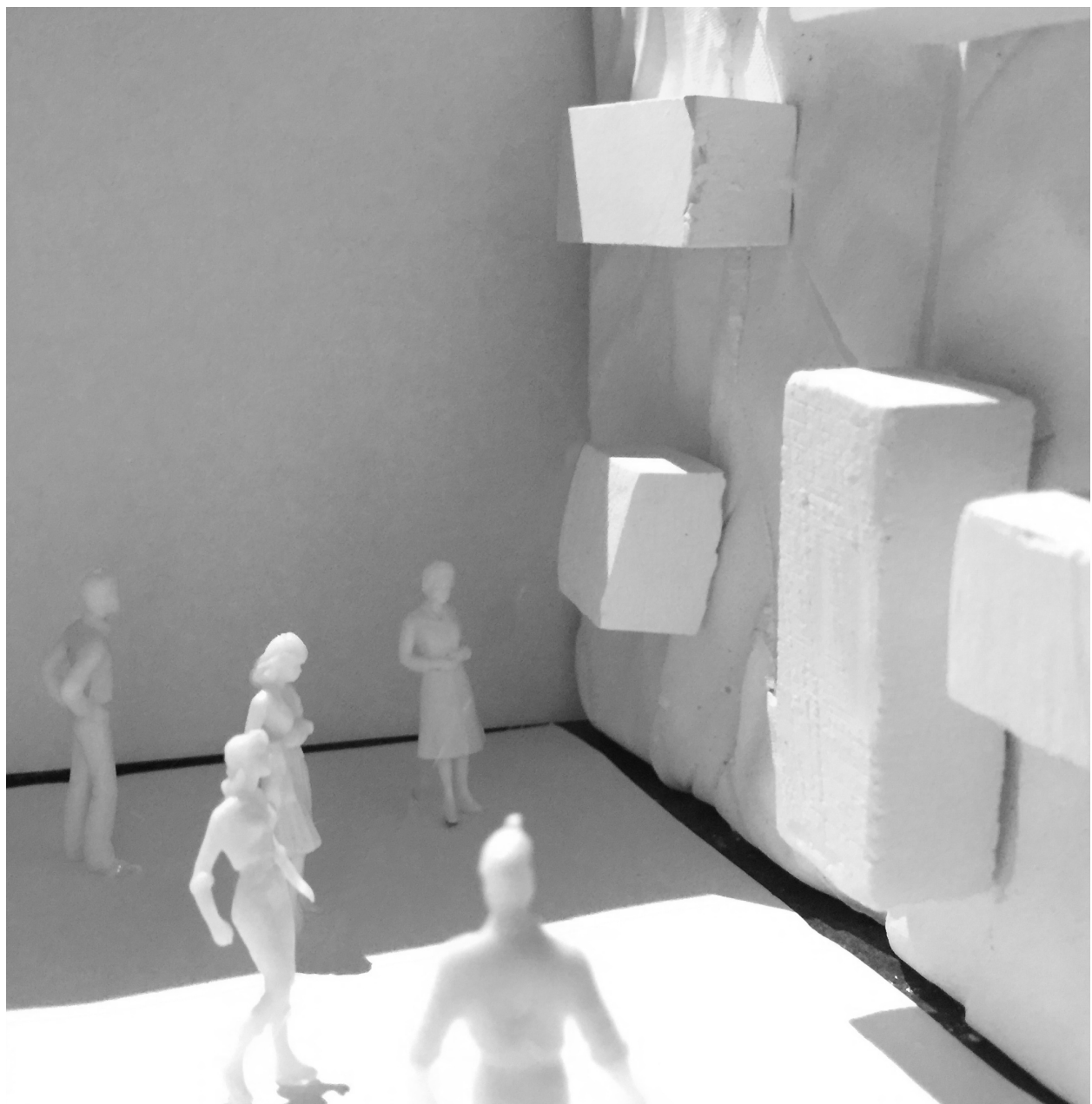
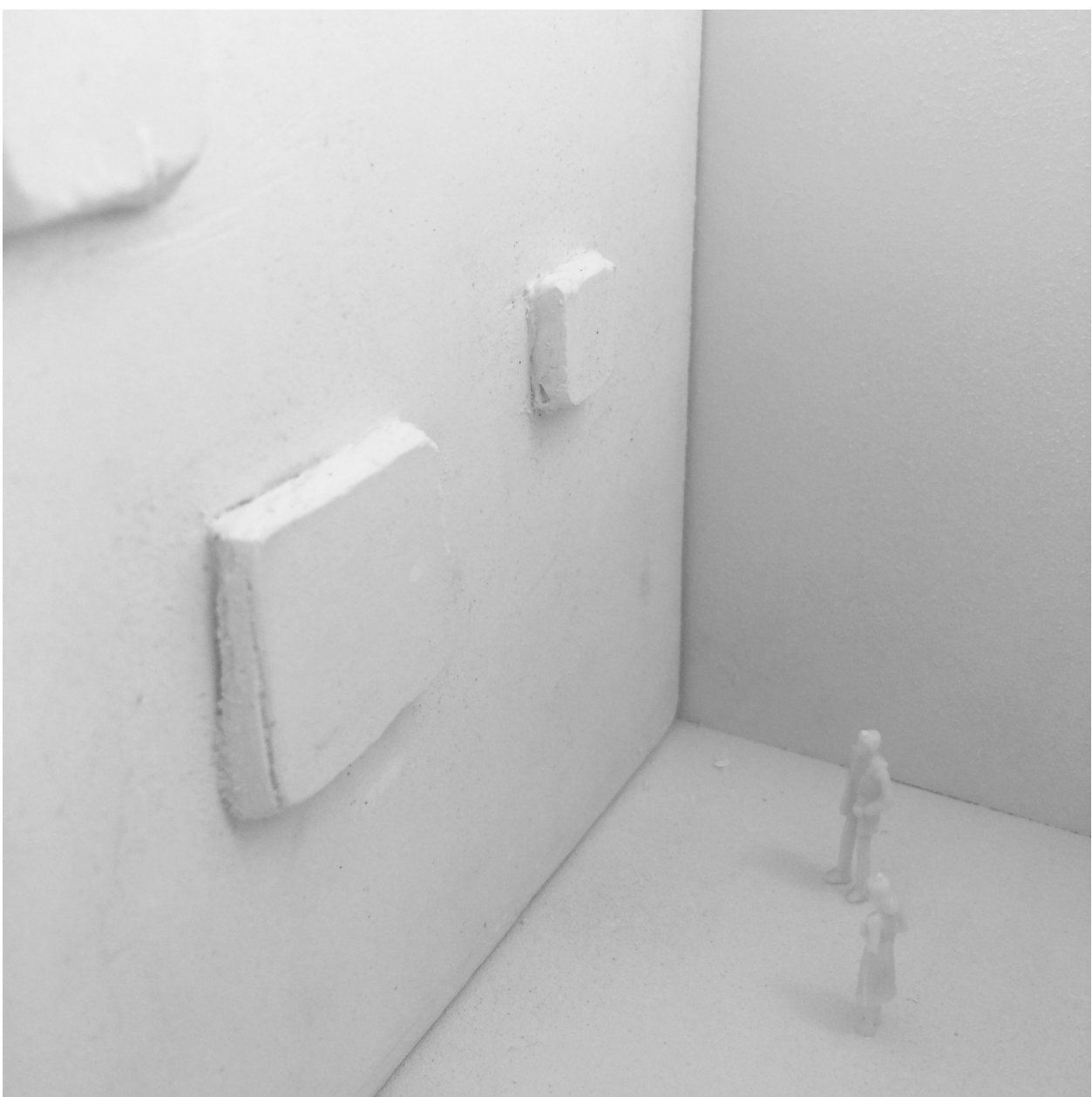
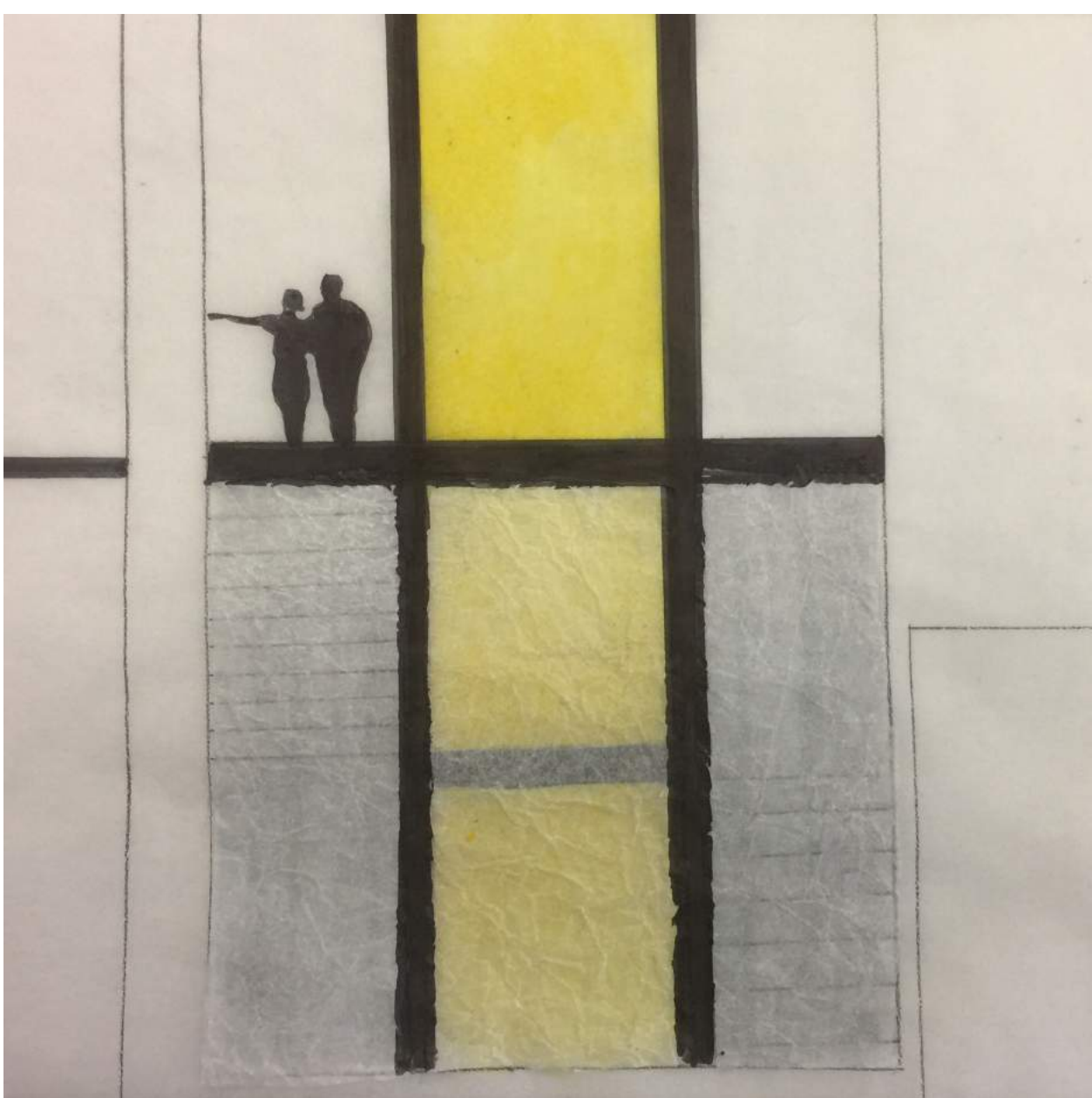
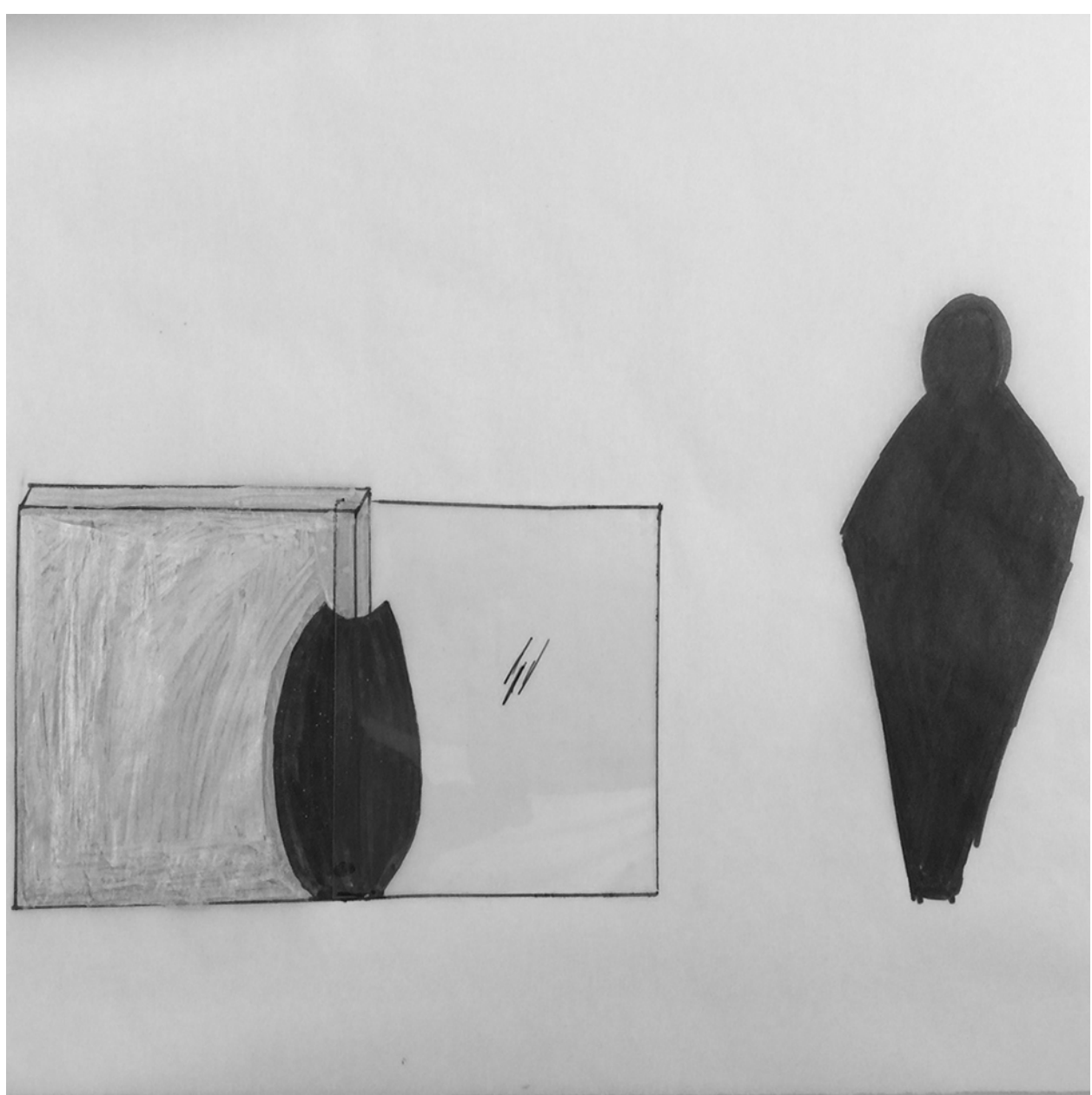
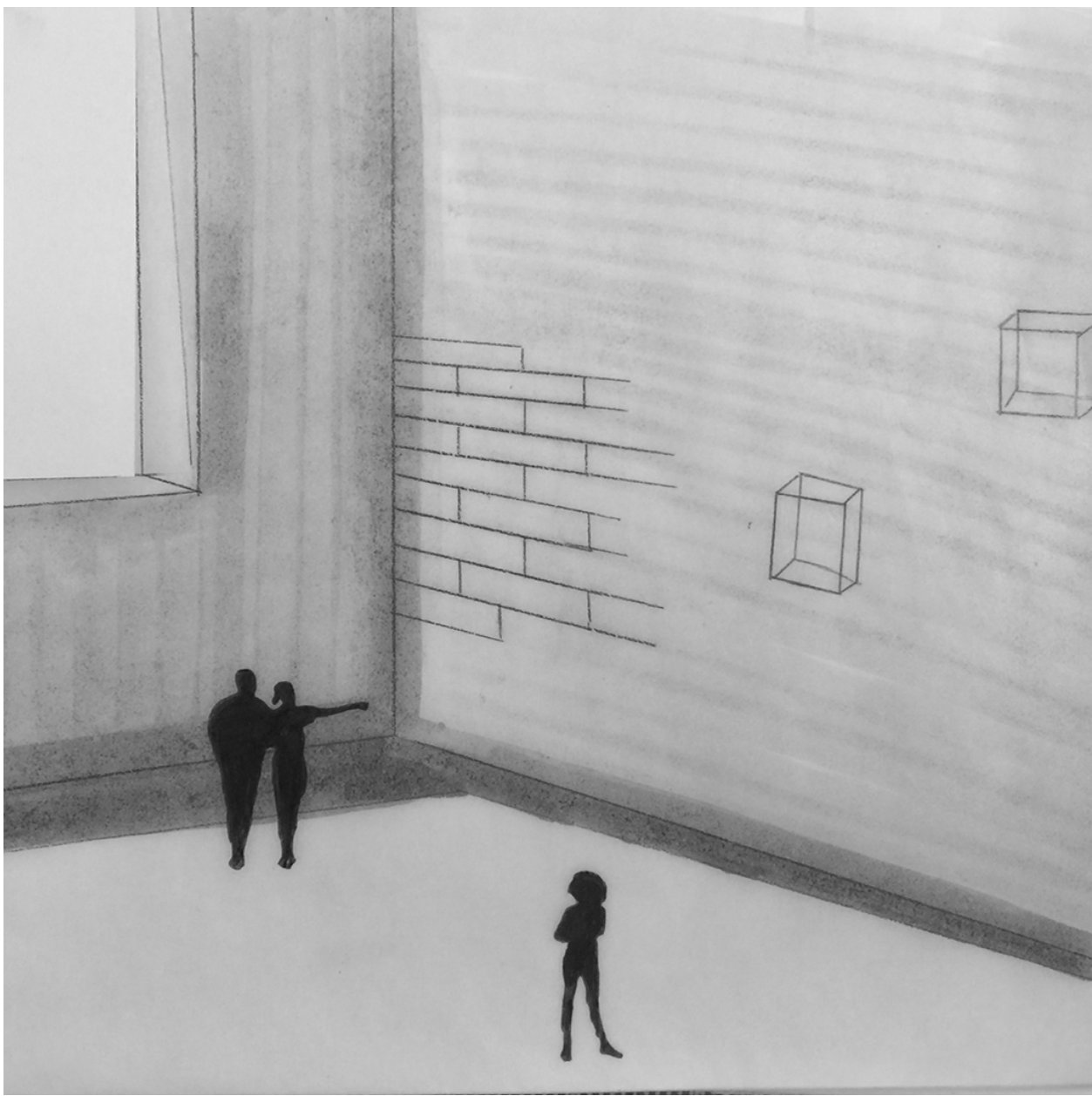
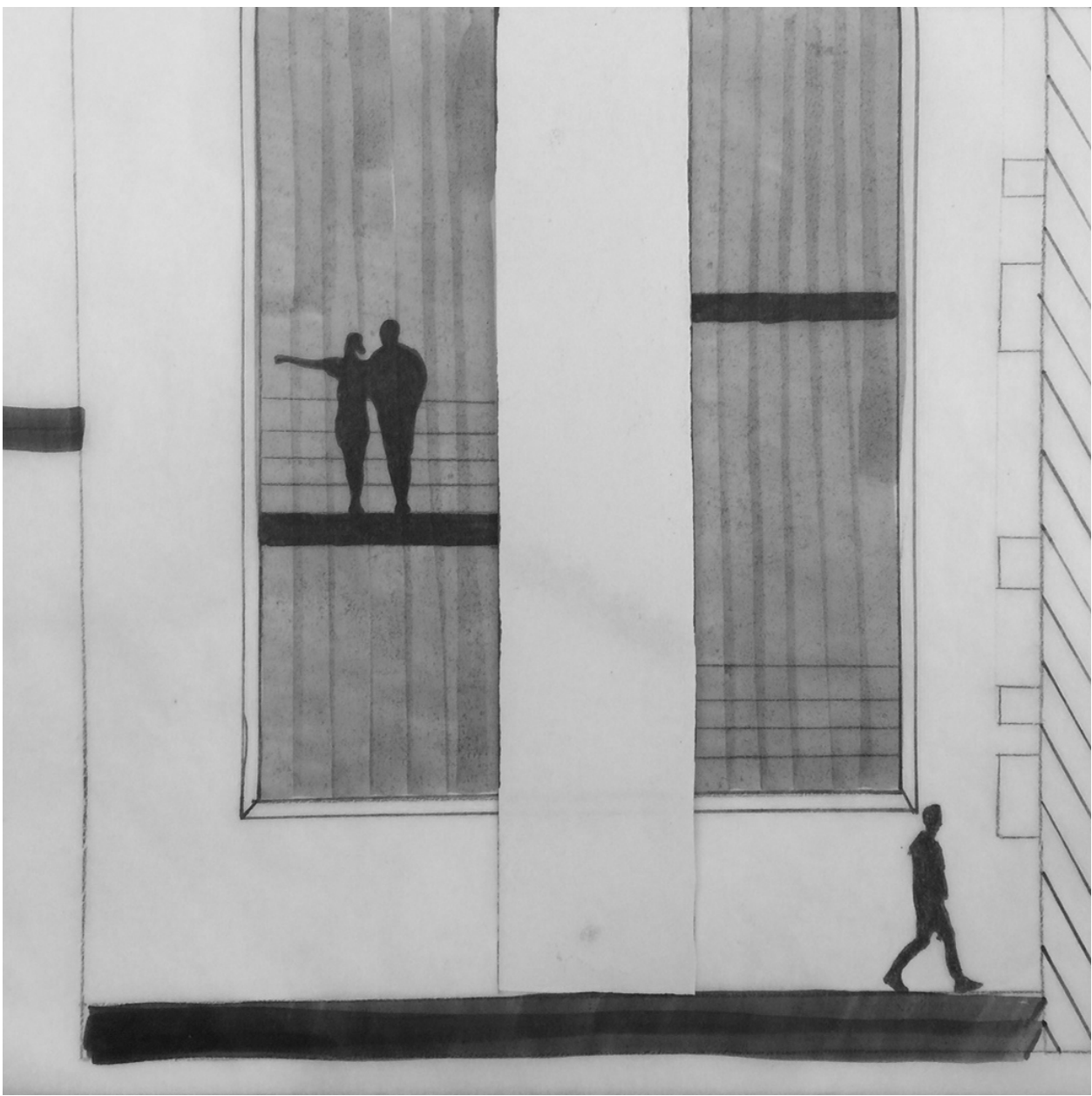
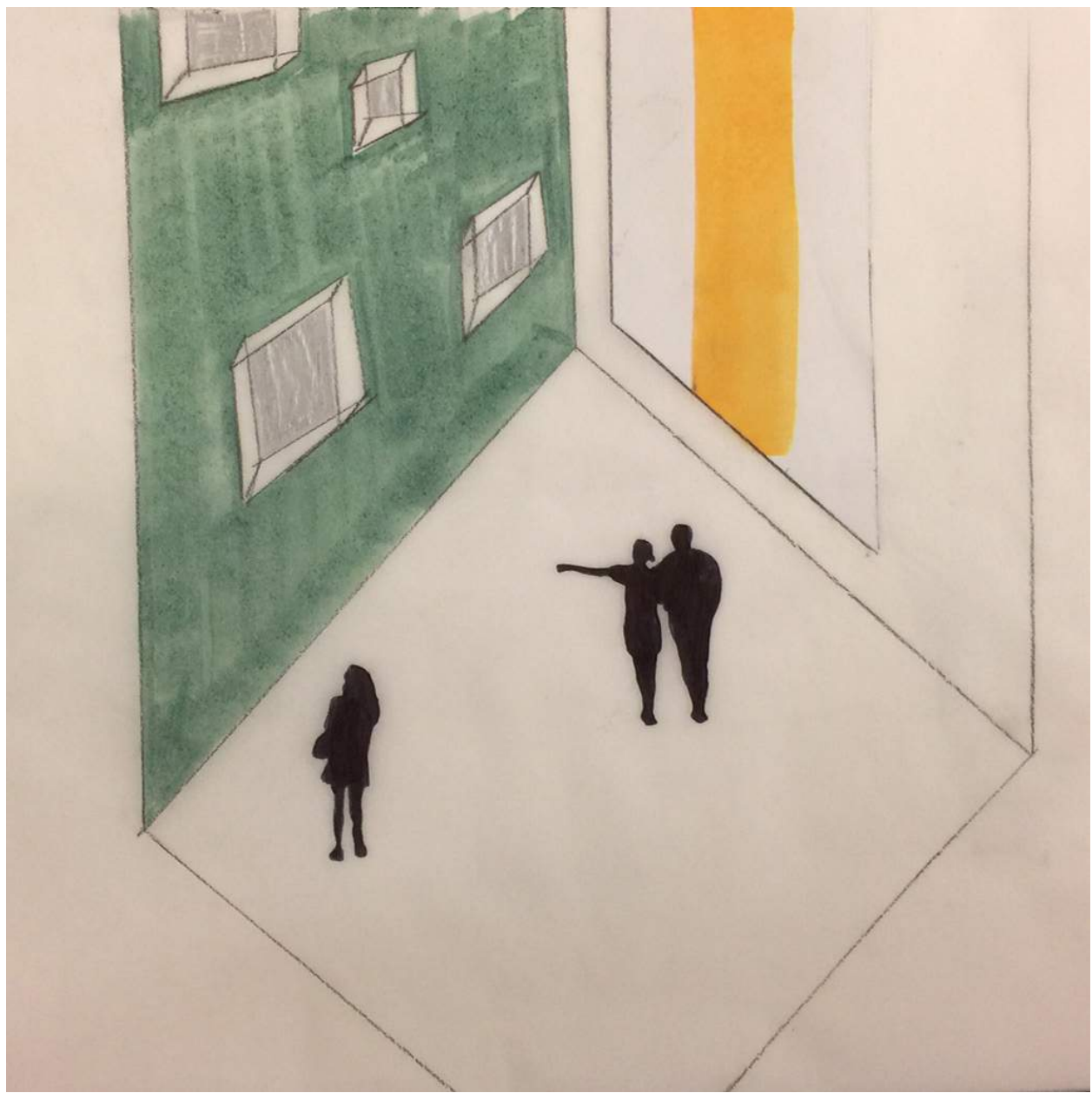


Constructing



Diagramming



Reviewing

Through multiple precedent studies I have gained a deeper understanding of light, color, texture, and program and how they relate to one another. I used light as the paramount element for my space. The space is vertically open to the sky above to let natural sunlight bathe the space. The way the light is framed within the space evokes a feeling of openness. Matched with the living texture from the live green wall makes the end users feel as if they are one with nature. The openness to the sky mixes with bringing the outdoors in, makes for a calming and airy space.